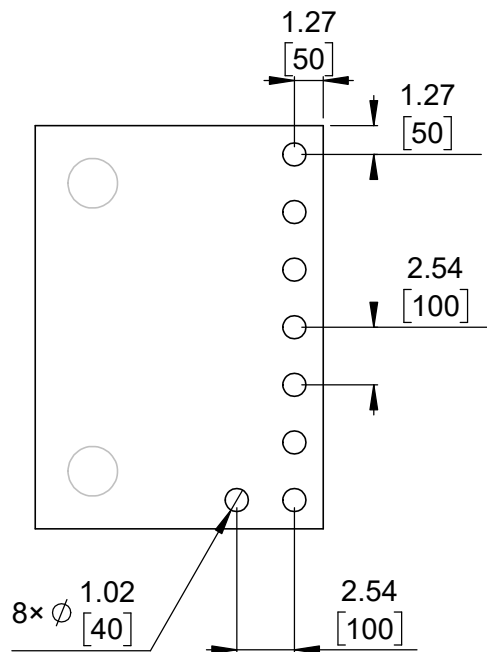
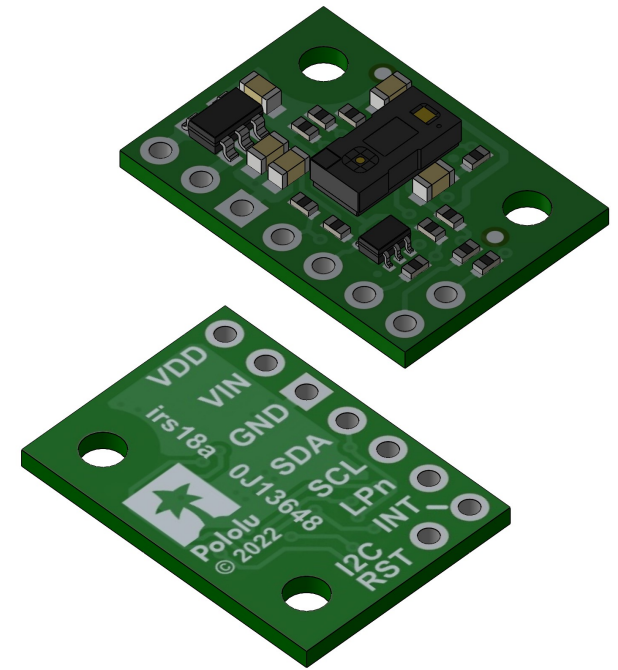


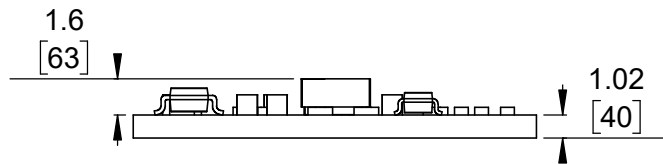
① Board dimensions (top view)  
Scale 3:1



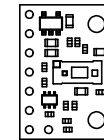
② Connector callouts (bottom view)  
Scale 3:1



③ Isometric view  
Scale 3:1




④ Profile  
Scale 3:1



⑤ Actual size  
Scale 1:1

- ①. Intended for #2 and M2 screws.
- ②. To get the specified scale, select 100% in print settings.
- ③. Drill location tolerance:  $\pm 0.1$  [ $\pm 5$ ].
- ④. Board edge tolerance:  $\pm 0.3$  [ $\pm 10$ ].

<https://www.pololu.com/product/3418>

Name: VL53L7CX Time-of-flight 8x8-Zone Wide FOV Distance Sensor Carrier with Voltage Regulator, 350cm Max		Item number: 3418
Drawing date: 26 July 2023	Dev code: irs18a	 © 2023 Pololu Corporation
Units: mm [mil]	Material: mixed	